

FilmArray™ Gastrointestinal Panel

1 Test. 22 Targets. All in about an hour.



Bacteria

Campylobacter (jejuni, coli and upsaliensis)

Clostridium difficile (toxin A/B)

Plesiomonas shigelloides

Salmonella

Yersinia enterocolitica

Vibrio (parahaemolyticus, vulnificus and cholerae)

Vibrio cholerae

Diarrheagenic *E. coli*/Shigella

Enteraggregative *E. coli* (EAEC)

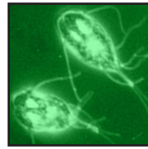
Enteropathogenic *E. coli* (EPEC)

Enterotoxigenic *E. coli* (ETEC) *lt/st*

Shiga-like toxin-producing *E. coli* (STEC) *stx1/stx2*

E. coli O157

Shigella/Enteroinvasive *E. coli* (EIEC)



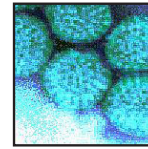
Parasites

Cryptosporidium

Cyclospora cayetanensis

Entamoeba histolytica

Giardia lamblia



Viruses

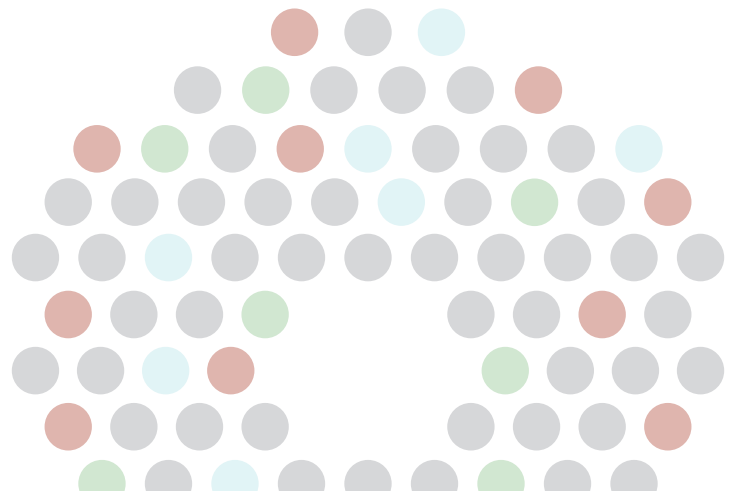
Adenovirus F 40/41

Astrovirus

Norovirus GI/GII

Rotavirus A

Sapovirus (I, II, IV and V)



22
Targets

Comprehensive Panel of 22 Targets

The FilmArray Gastrointestinal (GI) Panel tests for common gastrointestinal pathogens including viruses, bacteria and parasites that cause infectious diarrhea. The integrated FilmArray system brings sample to results in about an hour, with only 2 minutes of hands-on time.

- **Simple:** 2 minutes of hands-on time
- **Easy:** No precise measuring or pipetting required
- **Fast:** Turnaround time of about 1 hour
- **Comprehensive:** 22 target GI panel

For In-vitro Diagnostic Use
FDA-cleared



If you are interested in a free, no obligation demonstration of the FilmArray in your laboratory visit www.filmarray.com or call 1-800-735-6544.

**FREE
Demo!**

FilmArray™

The fastest way to better results.

Panel Specifications

Sample Handling

- Sample Type: Stool in Cary Blair
- Sample Volume: 200 µL

Performance Parameters

- Hands-on time: Approx. 2 minutes
- Run turnaround time: About 1 hour

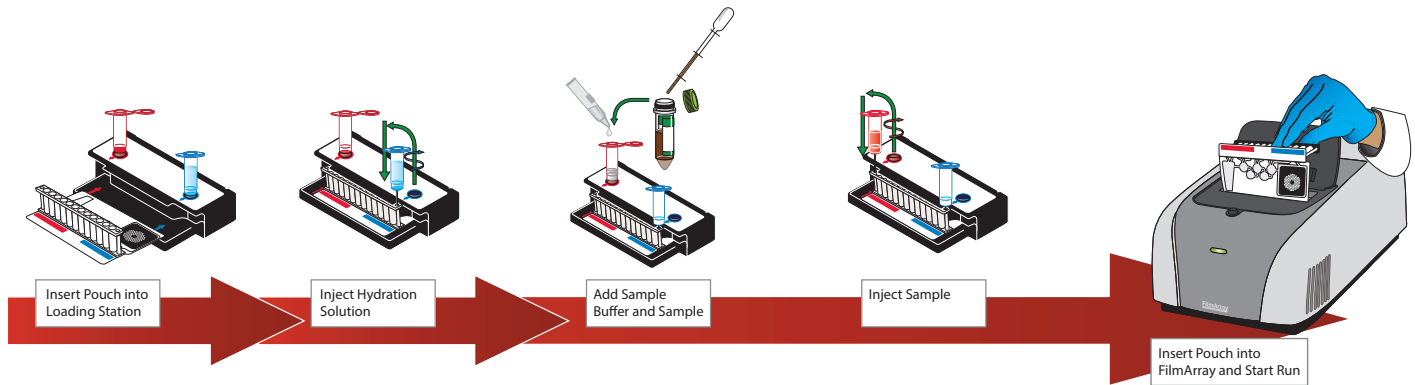
How Does the FilmArray Work?

The FilmArray reagent pouch stores all the necessary reagents for sample preparation, reverse transcription, PCR and detection in a freeze-dried format. Sample is collected in Cary Blair transport media. Prior to a run, the user injects hydration solution and sample combined with sample buffer mix into the pouch. The FilmArray instrument does the rest.

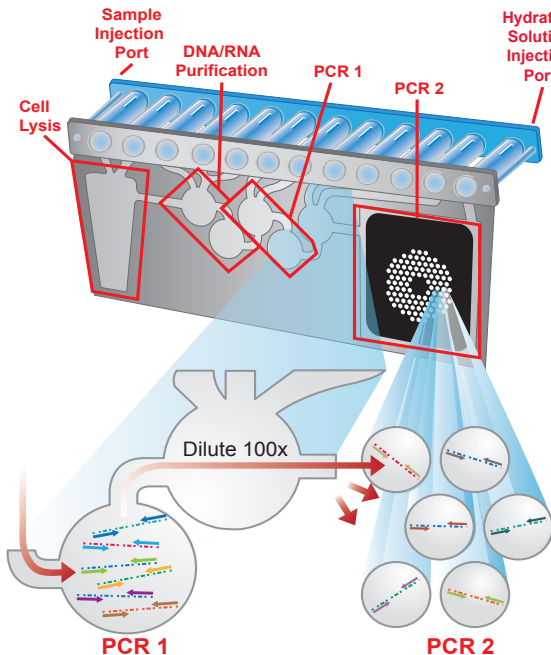
First, the FilmArray extracts and purifies all nucleic acids from the sample. Next, the FilmArray performs a nested multiplex PCR. During the first-stage PCR, the FilmArray performs a single, large volume, massively multiplexed reaction. Last, individual singleplex second-stage PCR reactions detect the products from the first stage PCR.

Using endpoint melting curve data, the FilmArray software automatically generates a result for each target in a single report.

Setting up the FilmArray is Easy – Sample in, Results out



The FilmArray Pouch and Analysis Report



FilmArray™ GI Panel		BIO FIRE	
		www.BioFireDx.com	
Run Summary			
Sample ID:	009196-03-0790	Run Date:	27 Sep 2013 12:03 PM
Detected:	<i>Clostridium difficile</i> toxin A/B	Controls:	Passed
Result Summary			
Bacteria			
Not Detected	<i>Campylobacter</i>		
✓ Detected	<i>Clostridium difficile</i> toxin A/B		
Not Detected	<i>Plesiomonas shigelloides</i>		
Not Detected	<i>Salmonella</i>		
Not Detected	<i>Vibrio</i>		
Not Detected	<i>Vibrio cholerae</i>		
Not Detected	<i>Yersinia enterocolitica</i>		
Diarrheagenic E. coli/Shigella			
Not Detected	Enteropathogenic <i>E. coli</i> (EPEC)		
Not Detected	Enterotoxigenic <i>E. coli</i> (ETEC) <i>lt/st</i>		
Not Detected	Shiga-like toxin-producing <i>E. coli</i> (STEC) <i>stx1/stx2</i>		
⊕ N/A	<i>E. coli</i> O157		
Not Detected	<i>Shigella</i> Enteroinvasive <i>E. coli</i> (EIEC)		
Parasites			
Not Detected	<i>Cryptosporidium</i>		
Not Detected	<i>Cyclospora cayentanensis</i>		
Not Detected	<i>Entamoeba histolytica</i>		
Not Detected	<i>Giardia lamblia</i>		
Viruses			
Not Detected	Adenovirus F 40/41		
Not Detected	Astrovirus		
Not Detected	Norovirus GI/GII		
Not Detected	Rotavirus A		
Not Detected	Sapovirus		
Run Details			
Pouch:	GI Panel v2.1	Protocol:	Stool FA v2.3
Run Status:	Completed	Operator:	John Madison (jrm)
Serial No.:	00788640	Instrument:	ITI FA "FA1315"
Lot No.:	133813		

The purchase of FilmArray System includes a limited, non-transferable license under U.S. Patent No. 5,871,908, owned by Evotec Biosystems GmbH and licensed to Roche Diagnostics GmbH, to use only the enclosed amount of product according to the specified protocols. No right is conveyed, expressly, by implication, or by estoppel, to use any instrument or system under any claim of U.S. Patent No. 5,871,908, other than for the amount of product contained herein.

The information contained in this document is subject to change without notice. No part of this document may be reproduced or transmitted in any form or by any means, electronic or mechanical, for any purpose, without the express written permission of BioFire Diagnostics, LLC. FilmAr-

ray Software, Detector, and Metacall software modules © 2002–2014 BioFire Diagnostics, LLC. BioFire Diagnostics, BioFire, the BioFire logo, FilmArray and LCGreen are trademarks of BioFire Diagnostics, LLC or BioFire Defense, LLC and are registered trademarks of BioFire Diagnostics, LLC or BioFire Defense, LLC in the United States. All other names of products and brands appearing in this manual are trademarks or registered trademarks of their respective owners.

The purchase of this product includes a limited, nontransferable license under specific claims of one or more U.S. patents as listed on BioFire Diagnostics' Web site (<http://www.biofire.com/LegalNotices/>) and owned by BioFire and the University of Utah Research Foundation.